



J | G E I G E R

ARCHITECTURALLY CONSCIOUS SHADING

CONTENTS

Our Process ..... 5

R Series ..... 7

P Series ..... 15

Commercial Systems ..... 16

Fabric ..... 21

Power & Control ..... 25

Manufacturing ..... 27



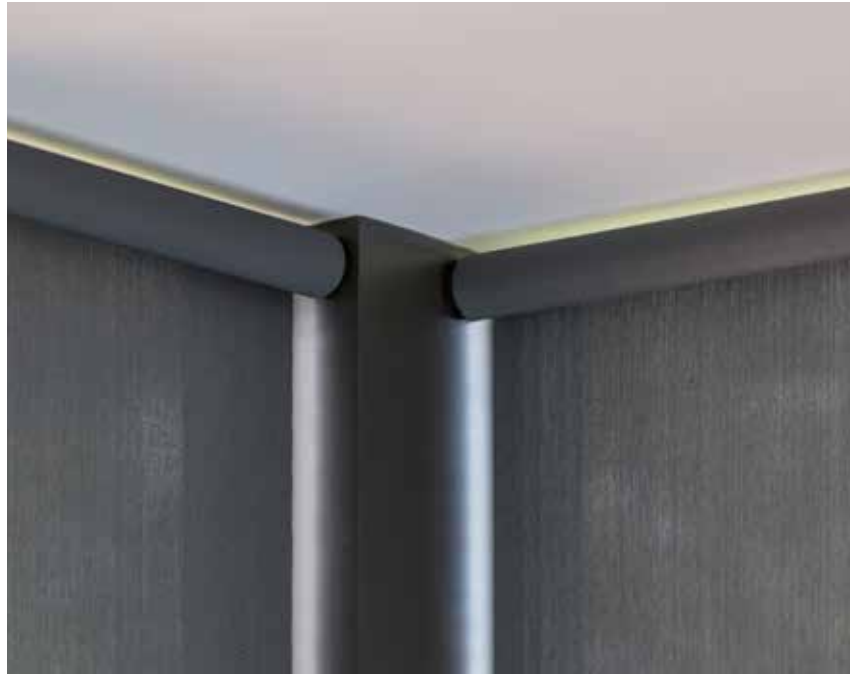
THANK YOU

On behalf of the entire J Geiger Shading family, I want to personally thank you for your interest in our products. We endeavor to offer the most elegant shading systems in the world. It’s an ambitious aim considering our humble beginnings—hand-cutting and sewing shades on the ground floor of my home in Charleston, SC.

Our transformation from small business to national brand is nothing short of spectacular, and it wouldn’t be possible without the enthusiastic support of discerning design fans like yourself. Thank you for your consideration. We look forward to serving you!

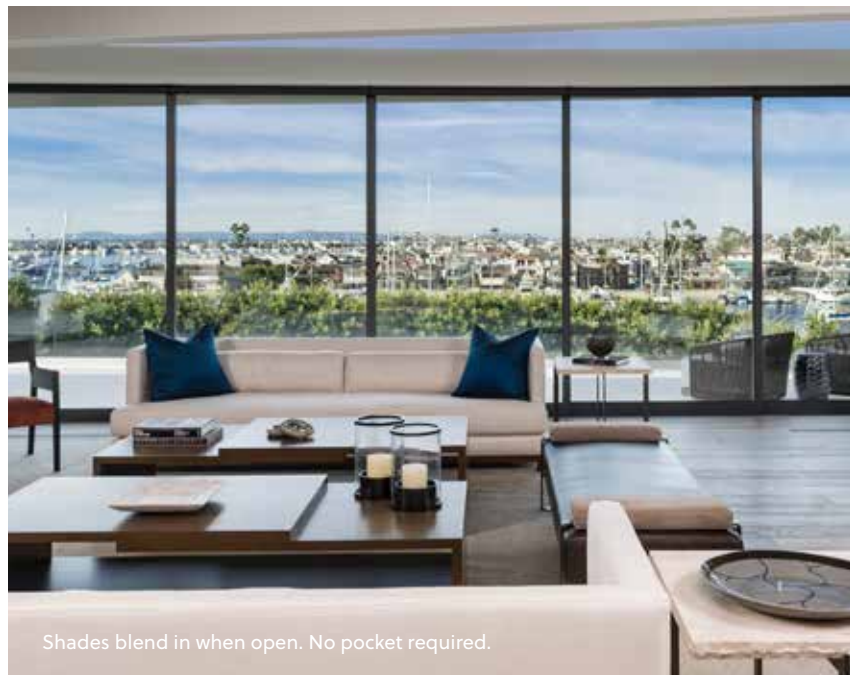
All the best,

*Jan Geiger*



*“When people visit the home, someone always asks, ‘Will you be adding shades?’ Everything is so compact, they don’t even notice the shades are already installed.”*

MIKE CLOSE, DEVELOPER  
CORONA DEL MAR, CA



Shades blend in when open. No pocket required.



Five coupled shades powered by two motors.



## THOUGHTFULLY DESIGNED *to accentuate architecture.* EXPERTLY INSTALLED *for a precision fit.*

We were the first to offer aesthetically appealing, fascia-free roller shades. Our most popular systems conceal unsightly wires and screws—eliminating the need for valances, shade boxes, fascia boards, and ceiling pockets. Our shades fit within most window casings for a low-profile look, and innovative hardware options (jamb mount, floating mount, corner mount, and couplers) ensure our systems can be adapted to enhance any space.

All of our systems are built on-site with the same level of care you would expect from a trim carpenter. Installation technicians adhere to a proprietary, two-

part process to ensure a precision fit. Brackets, tubes, and motors are installed without shade fabric during the trim phase. Fabric is then cut to exact specifications and installed during a second visit when the job site is clean and control mechanisms are fully operable.

Through careful planning and meticulous installation, our shades become an integral interior fixture—as functional and elemental as a door, floor, wall, or window. It's the best way to do shades. The difference is clear, and we believe the look speaks for itself.



---

*“We love how J Geiger shades disappear, allowing the extraordinary mountain views to take center stage.”*

SARAH BROUGHTON, ARCHITECT  
ASPEN, CO

---



R Series Shading System with Silver Aluminum hardware and Shantung Coffee fabric. Three coupled shades powered by a single motor.



## R SERIES

Wires and screws are concealed within this uniquely minimalist roller shade system. Sleek aluminum hardware can be installed inside a window or door jamb for a low-profile look or outside of a window casing to minimize light gaps.

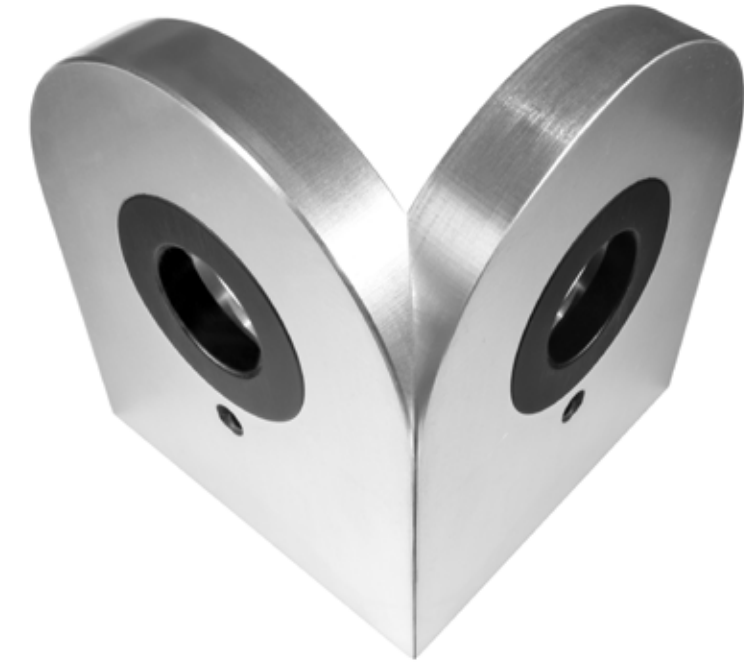
R5 coupler brackets connect shades in a seamless manner to match window mullions and accentuate architectural aesthetic. A single motor can be used to power multiple shades through the coupler.

*Silver aluminum, black aluminum, and custom powder coated finishes available.  
R1 Jamb Mount Idle Side, R2 Jamb Mount Drive Side, and R5 Coupler Bracket pictured above.  
Floating Mount, Corner Mount, Double Motor Mount, and Mini options available.*



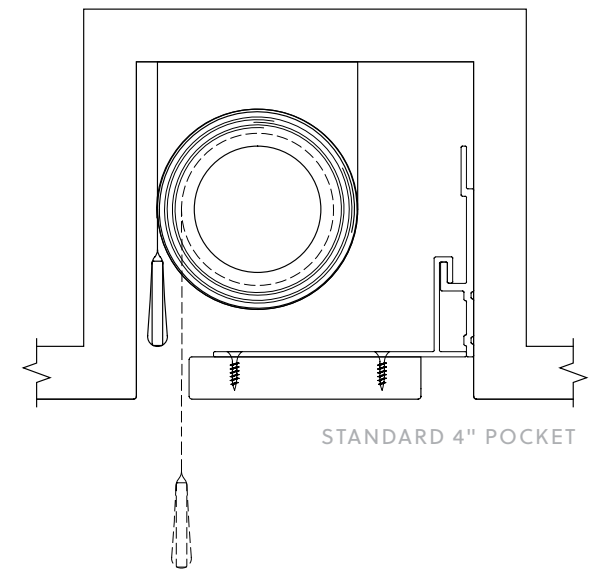
R Series Shading System with silver aluminum hardware. Room features five shades powered by two motors.





R Series Shading System with silver aluminum hardware. System is installed into recessed pockets. Patented corner bracket allows shades to meet at a perfect 90 degree angle.





## P SERIES

The P Series Shading System features a floating pocket cover with strategic 1/2" gaps on either side of the access panel. The patented, negative reveal design minimizes visual discrepancies between the ceiling finish and pocket cover surface for a fully integrated look.

4-8" pocket widths are available. Covers can be installed into existing pockets and can be joined at an angle for a uniform corner look.

When privacy options are desired, two shades (one sheer and one blackout) can be installed in a single pocket.

Custom Configurations Available

## COMMERCIAL SYSTEMS

The expectation for automation in multifamily developments, hotels, healthcare facilities, and office spaces has never been higher. Coincidentally, motorized window coverings have never been more affordable, thanks to advancements in shade motor design and an increasing number of wireless power options.

J Geiger is equipped to provide premier, motorized shading solutions for a variety of large-scale commercial projects, including whole-building and multi-building outfits that require thousands of shades.

*Specialized offerings are available upon request.*



Bjarke Ingels Group Offices  
Dumbo, NY

Conference rooms feature  
coupled shades powered  
by a single motor.



Tourists Hotel  
North Adams, MA

Guest rooms feature  
R Series jamb mount  
shades and custom  
up-rollers.



## FABRIC

Picking the perfect fabric starts here. Select a category that best suits your needs...

### SHEER FABRIC

Diffuses light and permits visibility even when the shades are closed. Varying levels of visibility are available. This option is ideal for rooms where light control is required but complete privacy is not.

### TRANSLUCENT FABRIC

Obscures visibility and offers a greater level of privacy than sheer fabric. Natural light is still allowed in when the shades are closed. This option is suitable for spaces that require ambient light, UV protection, and privacy.

### BLACKOUT FABRIC

Provides total privacy, reduces solar heat gain, and blocks all light. Light is, however, permitted around the shade edge. If complete darkness is desired, please inquire about pocket shades and blackout tracks.

*Visit [jgeigershading.com/fabric](https://jgeigershading.com/fabric) to learn more or schedule a complimentary design consultation to see samples.*



R Series Shading System featuring anodized black hardware and high performance E Screen KOOLBLACK fabric in Charcoal | Charcoal.



Photo by Anthony Tieuli for This Old House. R Series Shading System featuring silver aluminum hardware and Planet FR Grey fabric.



## POWER & CONTROL

Our shades seamlessly integrate with automation and lighting control systems such as Savant, Lutron, Crestron, and Control 4, or they can be linked to voice control apps such as Amazon Alexa and Google Home. Remotes and keypads are also available.

---

*Schedule a design consultation to learn more at  
[jgeigershading.com/contact](https://jgeigershading.com/contact)*

---



### J GEIGER SMART MOTORS

Wired for power and control. This option is suitable for integration with third party automation and lighting control systems.

### J GEIGER RF MOTORS

Wired for power and wirelessly controlled via remote, keypad, or app.

### RECHARGEABLE MOTORS

Wire-free power and controlled wirelessly via RF remote or keypad. Charging is easy and motor can operate for a year or more on a single charge.



## MANUFACTURING

Headquartered in historic Charleston, SC, J Geiger endeavors to create shades that are as beautiful as the city in which they are made.

To ensure superior aesthetic and fit, our team of craftsmen measure and cut each shade by hand to meet the precise specifications of your windows.

Shades are packaged with care in a unique crate that minimizes waste. Crates double as a workstation for installation technicians in the field, providing a clean, level surface to prep fabric panels for hanging.




---

*“The window treatment was a major detail in this apartment — basically we had a glass box. Your shading system was perfection — it complemented everything”*

ADELE ABIDE, DESIGNER  
NEW YORK, NY

---



J | G E I G E R

844-543-4437 | [JGEIGERSHADING.COM](http://JGEIGERSHADING.COM) | [INFO@J-GEIGER.COM](mailto:INFO@J-GEIGER.COM)

©2021 J Geiger Shading.  
All rights reserved.